



WHITEINCH & SCOTSTOUN
HOUSING ASSOCIATION LTD

Your Guide To **Asbestos**

Within Your Flat At 64 Curle Street

Whiteinch & Scotstoun Housing Association wish to ensure that all our tenants are safe and are not exposed to any unnecessary risks in our properties. The Association have prepared this Guidance Leaflet in order that you are informed about the asbestos materials in your property and are provided with guidance on how to prevent any risks arising from these asbestos materials.



As with many Multi Storey Blocks built in the 1960's and early 1970's asbestos containing materials were used in the construction of the properties. All flats in the MSF at 64 Curle Street have some asbestos containing materials and it is important that our tenants are made aware of this.

Asbestos containing materials do not present a significant risk to you or your family so long as they are in good condition and are not disturbed. The Health & Safety Executive who are responsible for ensuring that organisations like Housing Associations, Local Authorities and businesses comply with the law in relation to health and safety have made it clear that if asbestos containing materials are in good condition and are not likely to be damaged or disturbed then the best and safest option is to leave the asbestos materials in place.

Where are Asbestos Containing Materials in the Flats?

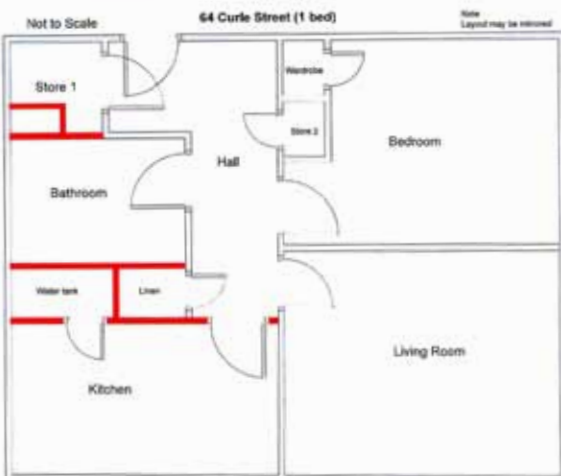
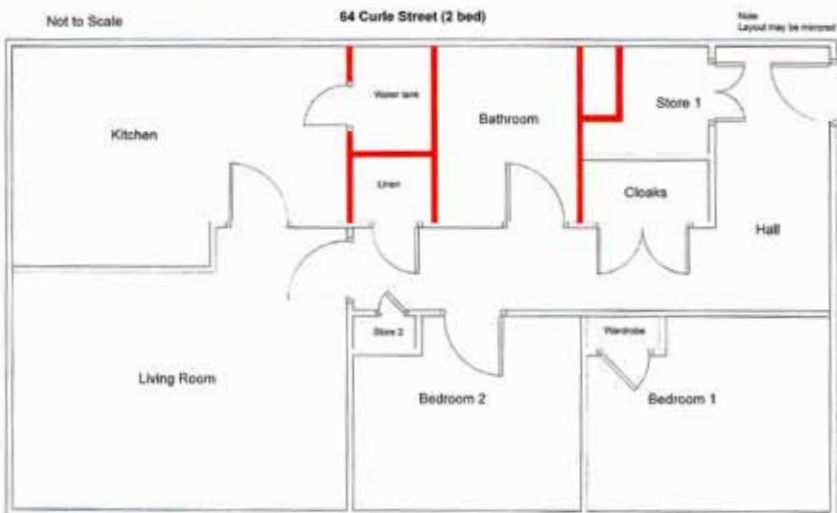
| Location | Position | Asbestos Type |
|------------------------------|--|---|
| Kitchen | Wall Panel to Water Tank/Linen Cupboard | Asbestos Insulation Board |
| Bathroom | Wall Panel to Water Tank/Linen Cupboard | Asbestos Insulation Board |
| Bathroom | Wall Panel to Store Cupboard | Asbestos Insulation Board |
| WaterTank/Linen Cupboard | All Wall Panels Infill Panel above Door | Asbestos Insulation Board |
| Store Cupboard at Front Door | Wall Panel to Bathroom Panels around Service Duct | Asbestos Insulation Board |
| Ceilings | Potentially all Ceilings | Textured Coating (possible asbestos content) |

The drawings included in this leaflet indicate the location of the asbestos insulation board wall panels in the flat types within 64 Curle Street.

Important Guidance

It may be difficult for you to be certain which wall panels may contain asbestos. If you are not sure it is important you contact Whiteinch & Scotstoun Housing Association where our staff will be pleased to provide advice.

You should not under any circumstances cause damage to the asbestos wall panels in your flat as this could result in asbestos fibres being released. Do not drill, sand, cut, or scrape asbestos wall panels or have anyone carry out this type of work for you. In addition you should not hang mirrors, pictures, kitchen utensils etc if this involves puncturing the wall panel and therefore disturbing the asbestos.



If you wish to make any changes or alterations to your flat including any which could possibly disturb any asbestos panels you **MUST** obtain consent from the Association's Repairs Section before works commences.



WHITEINCH & SCOTSTOUN
HOUSING ASSOCIATION LTD

A Charity Registered in Scotland No. SC035633

Whiteinch & Scotstoun Housing Association Limited
The Whiteinch Centre, 1 Northinch Court, Glasgow G14 0UG
Telephone: 0141 959 2552 Fax: 0141 950 4432